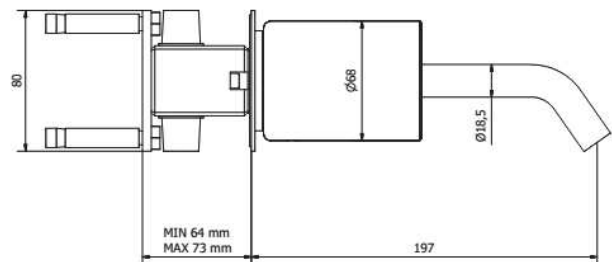
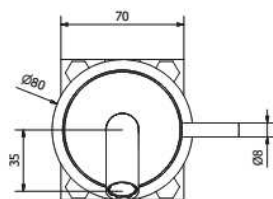


## CL28NM



### Description du produit

#### Robinet de lavabo mural

- laiton massif
- jet d'eau cristallin
- levier monocommande de type joystick
- drain non-inclus
- raccordement 1/2"

hauteur : 2<sup>15/16"</sup>  
projection totale : 8<sup>1/16"</sup>  
débit : 1.3 gpm\*

#### **FINIS**

Standard  
Chrome poli (pc)

Sur mesure  
15 finis sur mesure disponible  
(pour plus d'information, demander conseil à votre détaillant)

\*Aérateur à débit réduit optionnel : #ABAE443360010 (1.2 gpm)

# AQUABRASS

ELENCO PARTI			
ELEM	CODICE	DESCRIZIONE	QT
1	AQ0014880	Areatore PCA Cachè 5 l/min (44.3251.010)	1
2	AC0012483	Bocca Ø18.5 H110 125°	1
3	AC0012561	Anello Ø22 Ø18.9 H2	1
4	AQ0015009	OR 19x1 NBR 70 SH	1
5	AQ0014941	Copertura marmo Ø68 H90 nero marquinia	1
6	AQ0001091	Grano inox M6x10 p.p.	1
7	CPMR209CC-1	Premontato monocomando incasso	1
7.1	AQ0009818	OR 14x1.78 NBR 70 SH	2
7.2	AQ0004610	OR 12.42x1.78 NBR 70 SH	1
7.3	AS0012424	Raccordo M16x1 H23	1
7.4	AQ0013363	OR 41x2 NBR 70 SH	1
7.5	AQ0014774	Anello antifrizione Ø55.3 Ø52.9 Ø49.1 H11	1
7.6	AC0012428	Copriforo Ø55.2 H28	1
7.7	AQ0014775	Anello antifrizione Ø55.3 Ø51.2 H10	1
7.8	AQ0010432	OR 50.52x1.78 NBR 70 SH	1
7.9	AS0012481	Corpo miscelatore Ø55.4 Ø51 H85	1
7.10	AQ0014670	Grano inox M5x6 p.c.	2
7.11	AQ0001410	OR 4.2x1.9 NBR 70 SH	4
7.12	AS0010569	Tappo M8x1 H11 CH3	4
7.13	AQ0014769	Cartuccia ceramica joystick Ø25 aperta M6x1	1
7.14	AQ0010327	OR 4x1 NBR 70 SH	1
7.15	AQ0004600	OR 15.6x1.78 NBR 70 SH	1
7.16	AQ0006586	OR 25.12x1.78 NBR 70 SH	1
7.17	AC0012426	Ghiera premicartuccia M28x1 Ø30 H13	1
8	AC0012425	Manettino Ø8 H45 M6x1	1
9	AC0012427	Basetta Ø57 H6.5	1
10	AQ0014771	OR 52x2 NBR 70 SH	1
11	AC0012482	Piastra Ø80 H2	1
12	AQ0014919	Guarnizione biadesiva Ø75xØ63x1	1
13	AQ0014106	Etichetta MIN MAX	1
14	AQ0014044	Protezione Ø30 Ø35 H70	1
15	AQ0013064	Vite inox M5x50	2
16	CP11309CC-1	Premontato incasso	1
16.1	AQ0010152	OR 11x2 NBR 70 SH	4
16.2	AS0011313	Raccordo porta corpo L46	2
16.3	AQ0009818	OR 14x1.78 NBR 70 SH	2
16.4	AC0011309	Corpo incassato 40x40x55	1
16.5	AQ0001390	OR 14x2 NBR 70 SH	2
16.6	AC0011892	Attacco doccia G1/2" M19x1 H19	2
16.7	AQ0014112	Protezione filetto 25x21x18	2
17	AQ0009546	Tassello M8x60 TE acciaio inox	4
18	AQ0014021	Piastra di fissaggio 70x80x5	1

