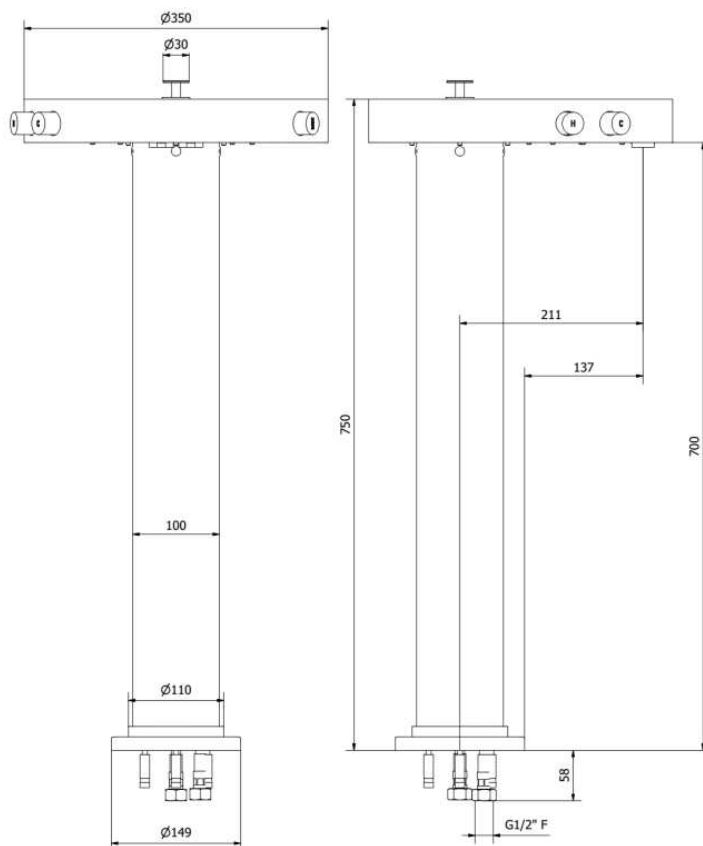


CL85BC



Description du produit

Robinet de bain au sol avec douchette dissimulée

- laiton massif
- jet d'eau cristallin
- contrôles d'eau chaude et froide
- sortie d'eau double
- douchette microphone dissimulée avec boyau de nylon gris de 5'
- déviateur à bouton-poussoir
- raccordement 1/2"

hauteur : 29^{1/2}"

projection totale : 13^{3/4}"

débit : (bec) 6.5 gpm (douchette) 2.5 gpm

FINIS

Standard

Chrome poli (pc)

Sur mesure

15 finis sur mesure disponible

(pour plus d'information, demander conseil à votre détaillant

Parts list			
ELEM	CODE	DESCRIPTION	QT
1	AC0012509	Knob for hand shower Ø30 H20	1
2	AC0010529	Upper plug hand shower	1
3	AQ0012176	Inox screw M3x6 ISO 7046	1
4	AS0010528	Connection piece for hand shower	1
5	AQ0004630	OR 17,16x1,78 NBR 70 SH	5
6	AC0011852	Hand shower body Ø32 H62	1
7	AQ0013936	ABS gasket support	1
8	AQ0013935	ABS gasket support	1
9	AQ0013934	Gasket	1
10	AC0010699	Connection piece for hose	1
11	AQ0015040	Grey nylon hose M15x1 G1/2" cone DN8 L110	1
12	AC0012501	Insert Ø32 M28x1,5 H15	1
13	AQ0009982	OR 22x1 NBR 70 SH	1
14	AQ0014841	Marble cover Ø350 H50 carrara's white	1
15	AQ0010948	Inox screw M5x25	6
16	AC0012510	Base for headworks 95x55x98	1
17	AS0012511	Connection piece G1/2" Ø12 (2001015)	8
18	AS0012512	L connection piece G1/2" Ø12 (2014012)	6
19	AQ0009742	Ceramic headwork 3/4" R	2
20	ACH012513	Handle Ø26 H45 stamped H	1
21	AQ0014670	Grubscrew M5x6 cone point	2
22	ACC012513	Handle Ø26 H45 stamped C	1
23	AC0012593	Base for diverter 60x38x90	1
24	AQ0009400	Water drain valve Ø14	1
25	AQ0004610	OR 12,42x1,78 NBR 70 SH	1
26	AS0012592	Plug Ø20 H15,2 M16x1	1
27	AQ0009417	OR 7x1 NBR 70 SH	1
28	AC0011087	Connection piece M10x1 H14	1
29	AS0011816	Screw M3 L9	1
30	AS0011840	Inox washer UNI 6592 M4	1
31	AQ0013871	Biconic rubber Ø17x3,75x8	1
32	AS0011839	Inox washer UNI 6593 M3	1
33	AS0012515	Diverter's rod Ø4 M3 L50	1
34	AQ0004600	OR 15,6x1,78 NBR 70 SH	1
35	AQ0013872	Gaco 11,8 X 3,5 NBR 70 SH	1
36	AS0011815	Diverter body M21x1 M19x1 L26,2	1
37	AQ0014936	Spring De5,4, Di4,4, Df0,5, St18, Lo25	1
38	ACT012516	Diverter knob Ø26 H35 stamped	1
39	AQ0009451	Fitting T G1/2"	1
40	AS0012517	L connection Ø12 (2004006)	1
41	AS0012518	Base for aerators 70x50x33	1
42	AQ0009068	Neostrah LP flow straightener - TF size (01,455,00001)	2
43	AC0012586	Cover's support Ø30 M27x1 M28x1 H44,5	1
44	AQ0010664	Inox screw M5x8	4
45	AS0012519	Inset for pipe Ø120 Ø93,8 H33	1
46	AS0010301	Reduction G1/2" M G1/2" M with valve seat	2
47	AQ0001330	OR 6,75x1,78 NBR 70 SH	1
48	AS0012567	Junction M10x1 M15x1 H21,5	1
49	AS0012520	Hand shower's support M27x1 H42	1
50	AS0012568	Insert Ø30 Ø19 H40	2
51	AQ0015039	Spring De21,5, Di19,3, (option)	1
52	AS0012581	Plug for column Ø10,5 Ø8 H5,5	9
53	AQ0009819	OR 7x3 NBR 70 SH	18
54	AS0012580	Column Ø9,8 H39,5 M4	9
55	AS0012521	Plate Ø330 H42	1
56	AQ0013736	Inox screw M4x6	9
57	AQL013722	Inox screw M5x8 polish	4
58	AC0012525	Pipe Ø100 H700	1
59	ABFH84953	Inox hose G1/2" F G1/2" F L715 DN10	2
60	AS0012523	Flange Ø94,8 Ø60 H25	1
61	AQ0013722	Inox screw M5x8	4
62	AQ0014939-5	Pipe MB longlife polyurethane 98 Ø12x9 L355	1
63	AQ0014939-2	Pipe MB longlife polyurethane 98 Ø12x9 L90 mm	1
64	AQ0014939-3	Pipe MB longlife polyurethane 98 Ø12x9 L152	1
65	AQ0014939-6	Pipe MB longlife polyurethane 98 Ø12x9 L45	1
66	AQ0014939-7	Pipe MB longlife polyurethane 98 Ø12x9 L60	1
67	AQ0014939-4	Pipe MB longlife polyurethane 98 Ø12x9 L225	1
68	AQ0014939-9	Pipe MB longlife polyurethane 98 Ø12x9 L345	1
69	AQ0014939-8	Pipe MB longlife polyurethane 98 Ø12x9 L630	1
70	AQ0014966	OR 100x2 NBR 70 SH	1
71	AC0012543	Ring for pipe Ø110 H12	1
72	AC0012522	Round carter Ø149 Ø100,5 H15,5	1
73	AQ0010075	Inox plug M8x60	4
74	ABFP84959	Assymetrical hose adapter	2

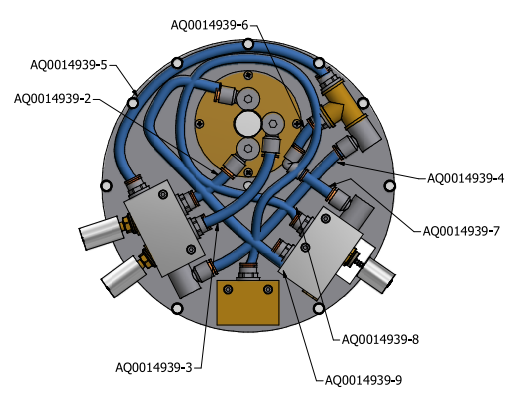
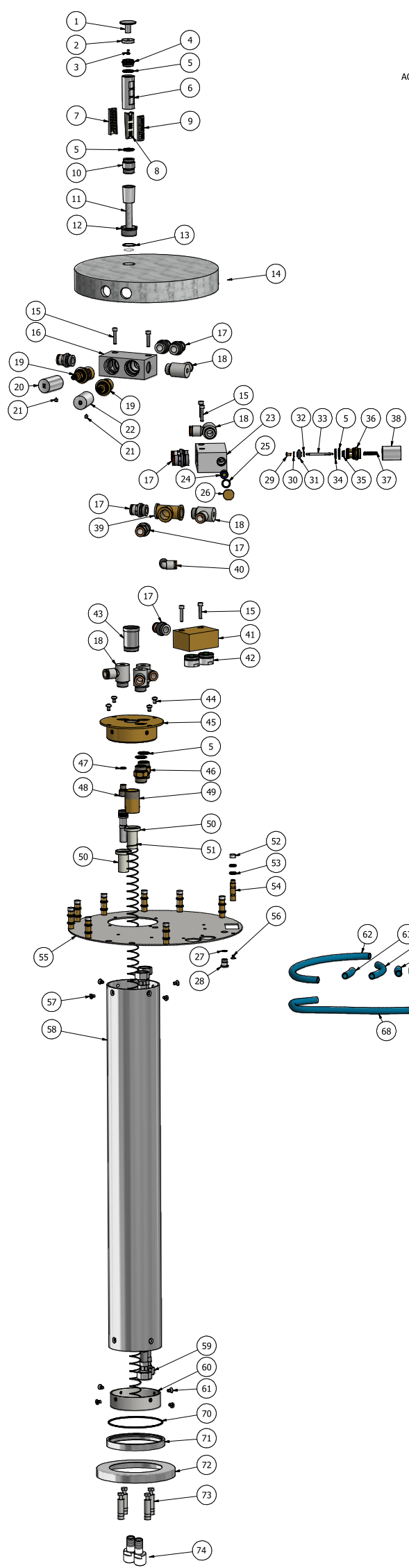


TABELLA			
CODICE TUBO	DA	A	LUNGHEZZA
AQ0014939-2	Attacco flessibile calda	Entrata vitone dietro calda	90 mm
AQ0014939-3	Attacco flessibile freddo	Entrata vitone dietro freddo	152 mm
AQ0014939-4	Uscita vitone fianco L freddo	Attacco T a L	225 mm
AQ0014939-5	Uscita vitone fianco dritto calda	Attacco T dritto	355 mm
AQ0014939-6	Uscita T	Curva L	45 mm
AQ0014939-7	Curva L	entrata deviatore fianco destro L	60 mm
AQ0014939-8	Uscita deviatore dietro dritto	Entrata aeratori	630 mm
AQ0014939-9	Uscita deviatore fianco sinistro L	Attacco flessibile doccia	345 mm

